



New Mexico's Reopening Depends on
Every New Mexican

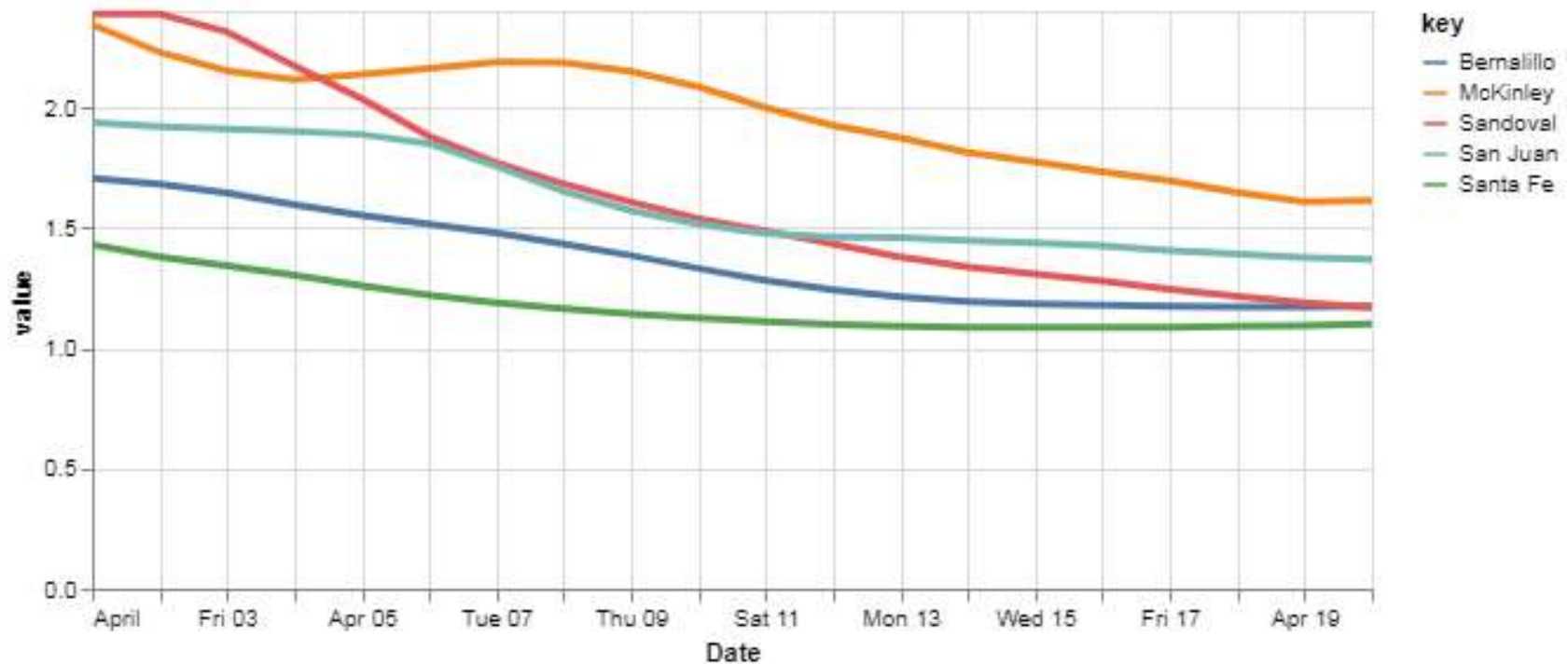
New Mexico Reopening Plan Preview

April 30, 2020

Our Actions are Working

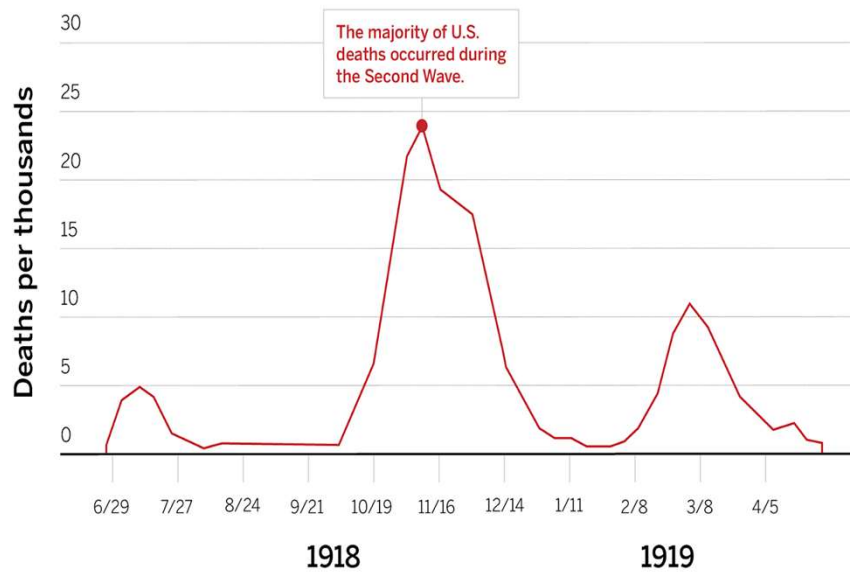
Statewide Effective Rate of Transmission = 1.24

R_eff over time, specific counties

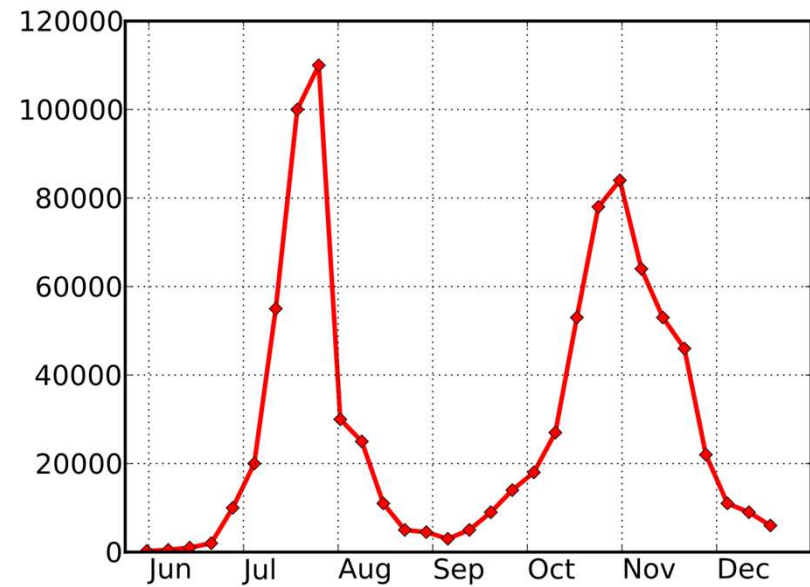


Lessons from Prior Pandemics

Spanish Flu Deaths 1918-1919



2009 Swine Flu Cases in London



Statewide Public Health Gating Criteria

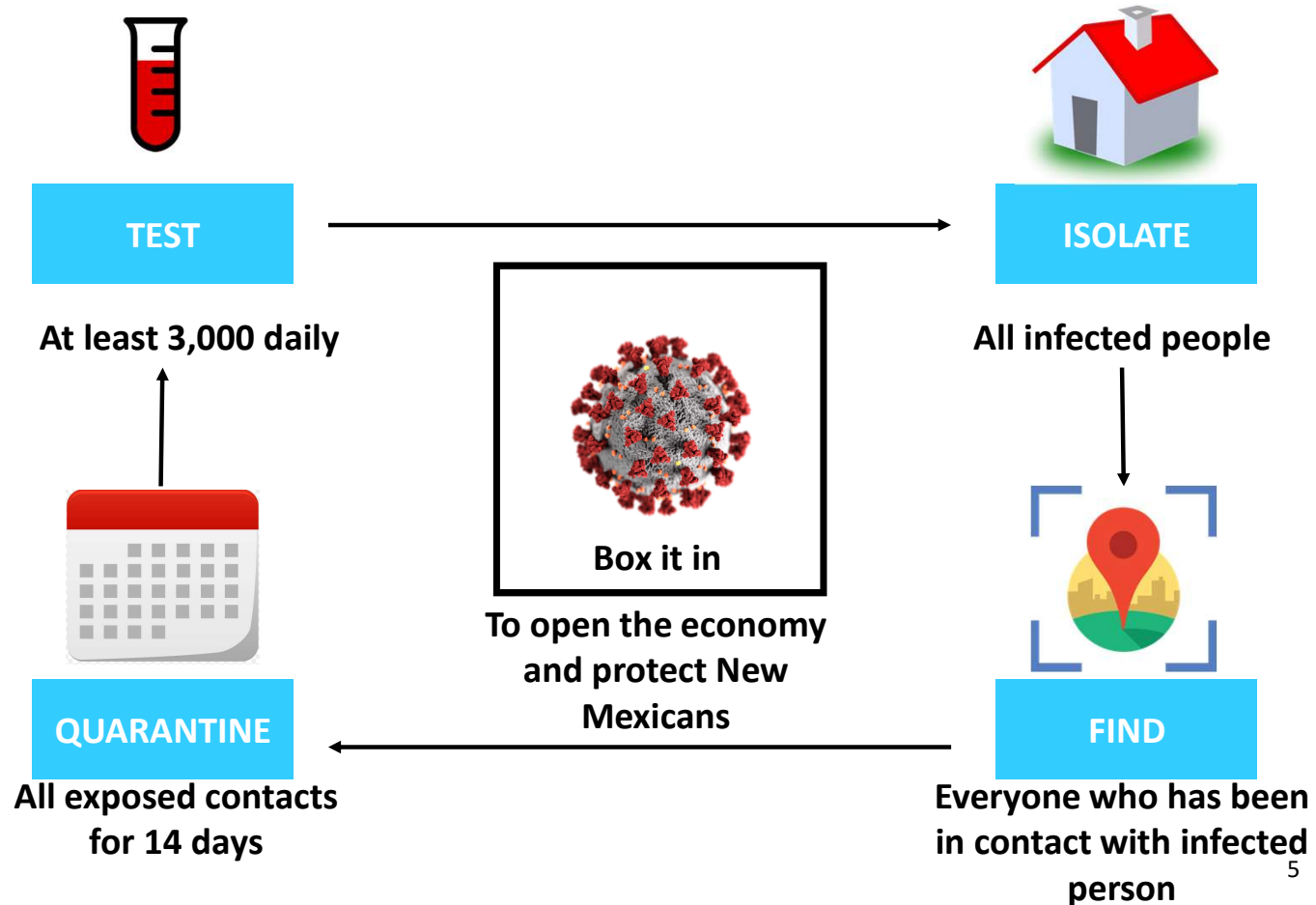
Criterion	Measure	Initial Gating Value	Predicted Status in 2 Weeks (assuming current social distancing)
Spread of COVID-19	Rate of COVID-19 Transmission	1.15 or less	Approximately 1.15
Testing Capacity: general and targeted populations*	Number of tests per day	3,000 / day	Achievable
Contact Tracing and Isolation Capacity	Time from: -positive test result to isolation recommendation for case -quarantine rec. for case contacts	24 hours 36 hours	Both achievable with expansion of contact tracers
Statewide Health Care System Capacity	Availability of scarce resources: -general beds -ICU beds -ventilators -PPE	All 3 sufficient based on modeling 14-day supply	Sufficient 28-day supply

*asymptomatic employees at high-risk sites, vulnerable populations, essential workers, congregate settings

ALL CRITERIA DRIVEN BY SOCIAL DISTANCING BEHAVIORS OF NEW MEXICANS

Box It In: Testing and Contact Tracing

- Adequate testing and contact tracing resources are critical to reopening the economy
- Research shows that rapid and effective contact tracing slows the spread of the virus
- New Mexico has rapidly expanded its testing, contact tracing, and case isolation capabilities in recent weeks



[This Photo](#) by Unknown Author is licensed under [CC BY-SA](#)

[This Photo](#) by Unknown Author is licensed under [CC BY](#)

[This Photo](#) by Unknown Author is licensed under [CC BY-SA](#)

Source: Adapted from Association of State and Territorial Health Officials material and Open Texas report dated April 27, 2020

COVID-Safe Practices (CSPs) for *All* New Mexicans

Stay Home

- In general, stay at home: avoid unnecessary travel, and always stay at home when you are sick (except for medical emergencies)
- Wash your hands frequently
- Avoid touching your eyes, nose, and mouth with unwashed hands
- Cover your cough or sneeze with a tissue, then throw the tissue in the trash
- [Clean and disinfect](#) frequently touched objects and surfaces
- Watch for symptoms of COVID-19

If you must go out:

- Wear a multilayer cloth face covering in public settings except when eating, drinking, or exercising outdoors
- Maintain a 6 foot distance from others
- Avoid gatherings
- Protect vulnerable populations by finding ways to connect without face-to-face contact

CSPs for All Employers

1. Limit operations to remote work to the greatest extent possible
2. Arrange workplace to provide for 6 feet of distance between individuals wherever possible
3. Close common areas where personnel are likely to congregate wherever possible, or modify them to minimize contact
4. Provide for all meetings to take place remotely whenever possible
5. Provide all employees with face coverings and require their use in the workplace
6. Train all employees on daily cleaning and disinfecting protocol, hygiene, and respiratory etiquette (e.g., covering coughs)
7. Make handwashing, sanitizer, and other hygiene support available to employees
8. Screen employees before they enter the workplace each day (verbally or with a written form or text/app). Send employees home who are experiencing the following COVID-19 symptoms related to COVID-19 and direct them to obtain free testing through DOH
 - Fever, cough, shortness of breath, chills, repeated shaking with chills, muscle pain, headache, sore throat and/or loss of taste or smell
9. Prohibit employees with known close contact to a person who is lab-confirmed to have COVID-19 to return to work until the end of the 14-day self-isolation period
10. Minimize non-essential travel. Adhere to CDC guidelines and state orders regarding isolation following out-of-state travel
11. Adhere to all CDC and OSHA guidelines

Additional CSPs for Retailers

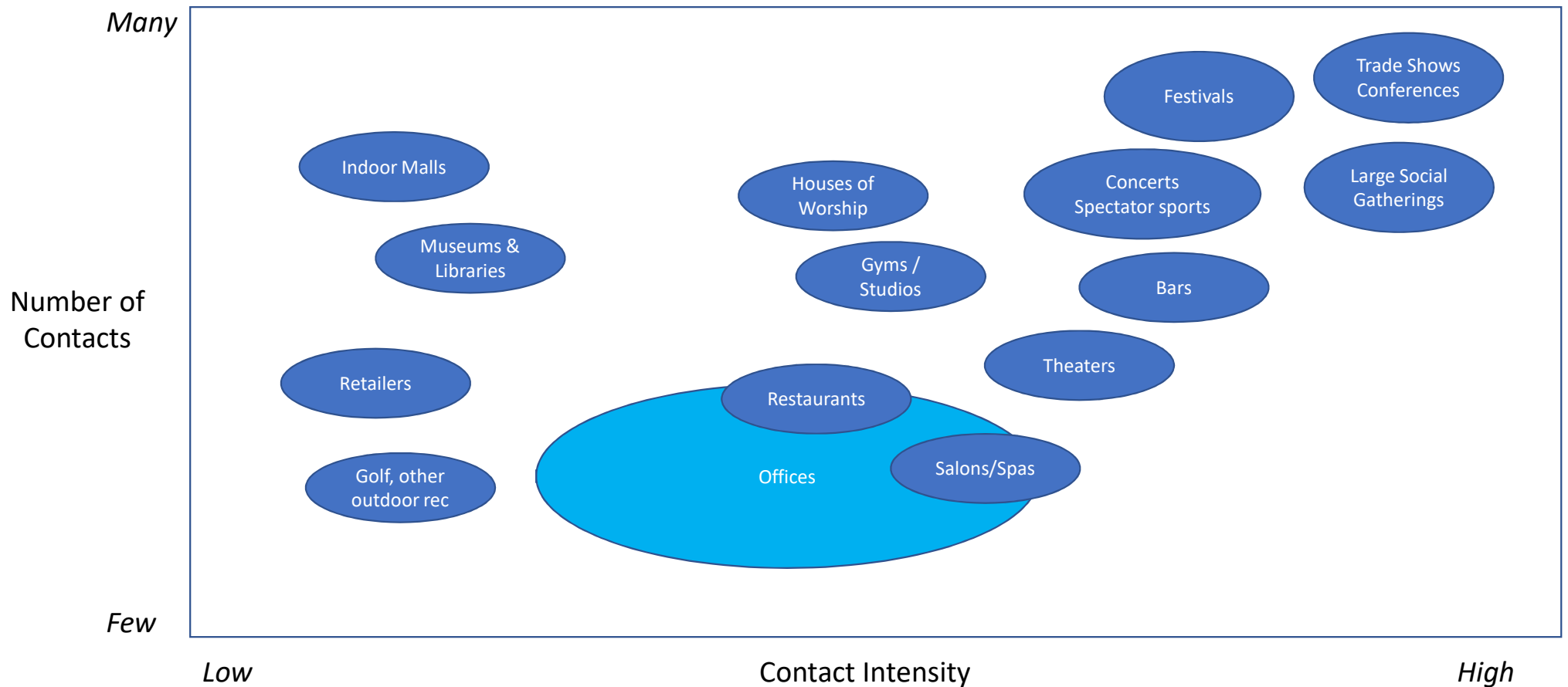
Required

1. Adhere to COVID-Safe Practices for All Employers
2. Adhere to maximum occupancy limits per the State's Public Health Order
3. Utilize signs, stanchions and/or floor decals to support 6-foot social distancing, including one-way aisle traffic and separate entry/exit wherever possible
4. Utilize signage to communicate occupancy limits and encourage customers to wear face coverings
5. Maintain a schedule of stringent daily cleaning and sanitizing
6. Once every two hours (or more frequently), clean and disinfect high-touch items such as doors, fitting rooms and credit card terminals
7. Establish safety protocols to allow for contactless curbside pickup and home delivery wherever possible

Best practice

1. Install large plexiglass sneeze guards at cash registers wherever possible
2. Arrange for contactless payment and receipt options to the greatest extent possible
3. Screen employees and customers with a no-contact thermometer; individuals with a temperature reading above 100.4°F should be denied entry
4. Offer face coverings, handwashing, and hand sanitation to customers

Simple Framework for Assessing Risk



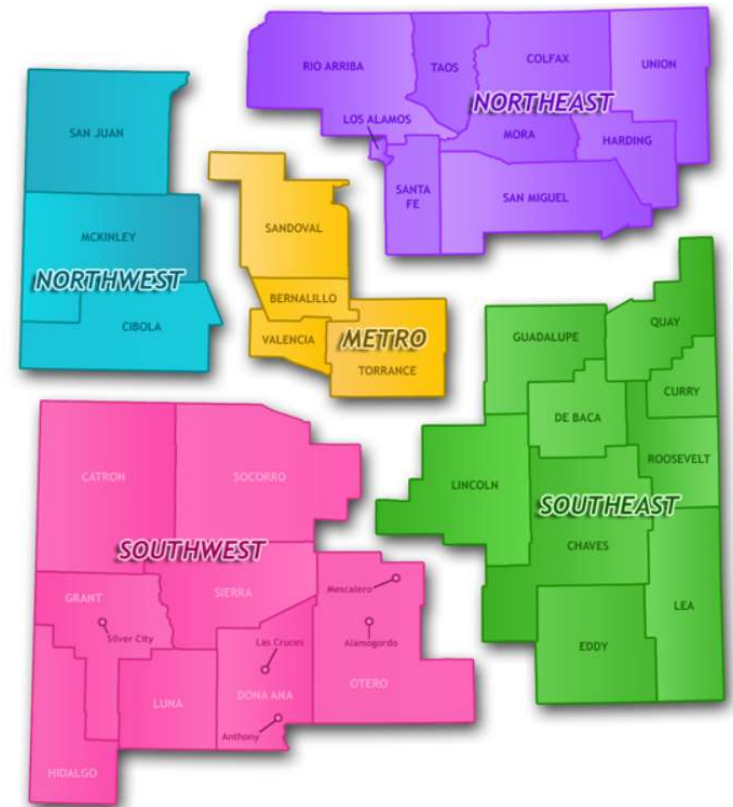
Source: Adapted from Johns Hopkins University, Bloomberg School of Public Health, Center for Health Security. Public Health Principles for a Phased Reopening During COVID-19: Guidance for Governors. April 7, 2020

Process of Moving Into and Through Stages

- Frequency of Decisions re Movement UP to a New Stage: Every 2-3 weeks
- Who Measures Gating Criteria
 - Spread: MAT Modeling Workgroup
 - Testing: DOH Testing Team
 - Isolation and Outbreak Containment: DOH Epi
 - Healthcare System Capacity: MAT Operations Team/DOC
- Who has input and who decides?
 - Economic Recovery Council gives input
 - Mayors' Council, other state and local leaders, businesses and constituents give input
 - DOH/DOC + MAT provide input and recommendations
 - Governor decides

New Mexico Moves Forward as One State

- Statewide Gating Criteria used at each stage for New Mexico
- Gating Criteria also applied to each of the five public health regions of the state
- Certain regions may be delayed if they cannot meet Gating Criteria at a regional level
 - Relaxing of restrictions in the Preparation Phase starting May 1 will not apply to Northwest New Mexico (San Juan, McKinley, and Cibola counties)
- No regions, counties, or cities move ahead of the state



Preparation Phase

Start	May 1
Estimated End <u>if</u> New Mexicans Practice Social Distancing	Mid-May

What Opens? How Does it Open?

- Non-essential retailers can operate via curbside pickup and delivery service only where permitted by their license
- State parks to reopen on a modified basis, as staff is available. Day use only, no camping or visitor centers
- Golf Courses allowed to open for golf only. No dine-in food service or retail
- Pet humane adoption/groomers/daycare/boarding permitted to operate
- Veterinarians permitted to operate
- Gun stores can operate by appointment only
- Restrictions on certain medical procedures lifted, but only for those hospitals and providers that can meet capacity requirements and show adherence to DOH emergency requirements

What Remains Closed or Restricted?

- Instruction to Stay Home remains in place for all individuals
- Non-essential retailers and workplaces
- Dine-in service at restaurants and bars
- Indoor malls, gyms, salons, theaters, casinos
- Mass Gatherings restricted as per the current PHO
- 14-day quarantine order remains in place for out-of-state airport arrivals
- Vacation rentals prohibited to out-of-state residents

Phase One

Estimated Start if New Mexicans Practice Social Distancing

Mid-May

What Opens? How Does it Open?

- All retailers may operate according to Retail COVID-Safe Practices at 20% fire code occupancy
- Non-essential businesses generally may operate according to CSPs at up to 50% of pre-crisis staffing levels
- Dine-in service at restaurants and bars permitted according to CSPs (in development) at up to 50% occupancy, no barstool or standing service. No live music
- Gyms and salons can operate according to CSPs
- Hotels permitted to operate according to CSPs at up to full capacity
- Houses of worship can operate according to CSPs at capacity to-be-determined

What Remains Closed or Restricted?

- Theaters
- Casinos
- Instruction to Stay Home remains in place for Vulnerable Individuals⁽¹⁾
- Visits to long-term care and other congregate care facilities restricted as per current PHO
- Mass Gatherings restricted (includes concerts, events, and social gatherings)
- 14-day quarantine order remains in place for out-of-state airport arrivals
- Vacation rentals prohibited to out-of-state residents

(1) Vulnerable Individuals: older (>64) adults, people with asthma, chronic lung conditions, immune deficiency and those receiving cancer treatment, serious heart disease, diabetes, on dialysis, severe obesity, chronic liver disease, people living in nursing facilities and other congregate settings

Phase Two

Estimated Start if New Mexicans Practice Social Distancing

Early June

What Opens? How Does it Open?

- Theaters may operate according to CSPs and capacity restrictions
- Bars may operate according to CSPs and capacity restrictions
- Casinos may operate according to CSPs and capacity restrictions

What Remains Closed or Restricted?

- Instruction to Stay Home remains in place for Vulnerable Individuals⁽¹⁾
- Visits to long-term care and other congregate care facilities restricted as per current PHO
- Mass Gatherings restricted (includes concerts, events, and large social gatherings)
- 14-day quarantine order remains in place for out-of-state airport arrivals

(1) Vulnerable Individuals: older (>64) adults, people with asthma, chronic lung conditions, immune deficiency and those receiving cancer treatment, serious heart disease, diabetes, on dialysis, severe obesity, chronic liver disease, people living in nursing facilities and other congregate settings

Phase Three

Estimated Start <u>if</u> New Mexicans Practice Social Distancing	Early July
Estimated End	Unknown

What Opens? How Does it Open?

- Vulnerable Individuals⁽¹⁾ instructed to practice social distancing
- Aim to reopen schools in August with modified schedules and procedures to protect students, faculty, and staff

What Remains Closed or Restricted?

- Mass Gatherings larger than 100 people still prohibited. No large festivals or fairs
- Some concerts and spectator sports may be permitted on a modified basis with capacity restrictions
- Visits to long-term care and other congregate care facilities restricted to some extent
- Reassess quarantine order for out-of-state airport arrivals

(1) Vulnerable Individuals: older (>64) adults, people with asthma, chronic lung conditions, immune deficiency and those receiving cancer treatment, serious heart disease, diabetes, on dialysis, severe obesity, chronic liver disease, people living in nursing facilities and other congregate settings